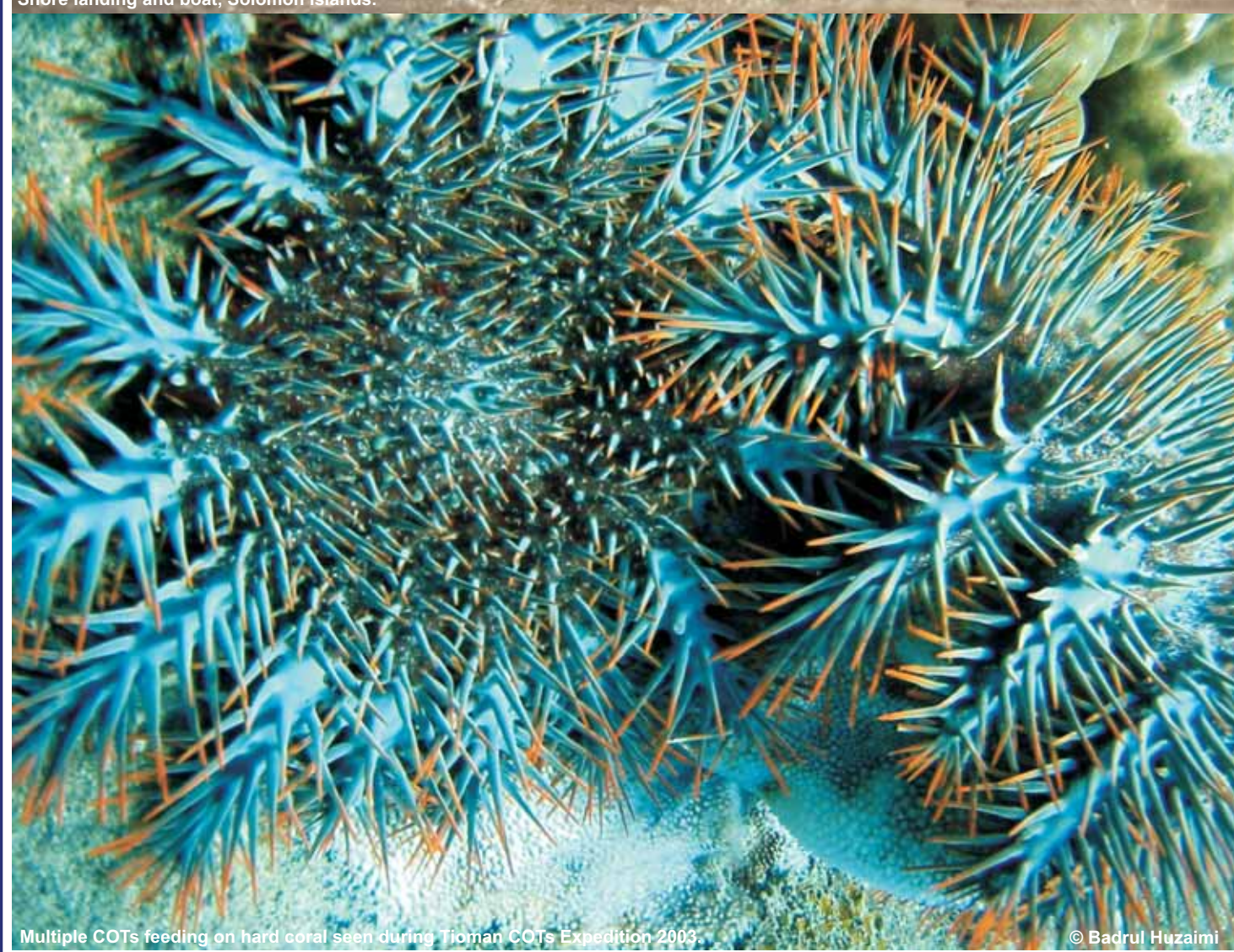




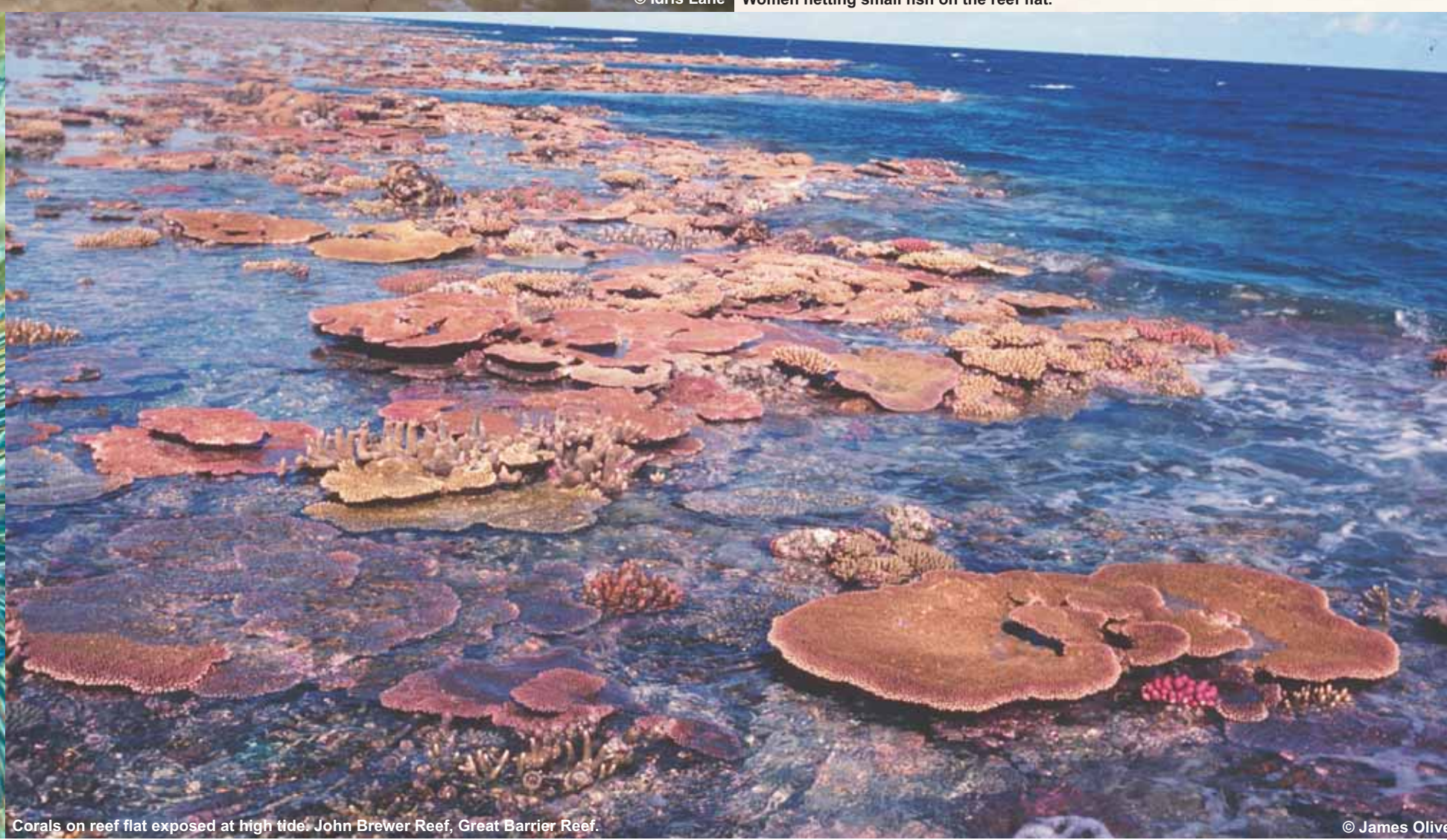
Shore landing and boat, Solomon Islands.



Women netting small fish on the reef flat.



Multiple COTs feeding on hard coral (left) and on a shallow COTs (right) (Berkelmans, 2002)



Corals on reef flat exposed at high tide, John Brewer Reef, Great Barrier Reef.



Damselfishes (Family Pomacentridae) and branching coral.

© yusuf yusuf

ICRI:

An International Forum for Coral Reef Stakeholders

ICRI Secretariat

ICRI is co-ordinated by a Secretariat voluntarily hosted for two years by the governments of one or two countries.

In 1994, governments, non-governmental, intergovernmental organizations, academia and the private sector came together out of concern for the alarming decline of coral reefs to form the International Coral Reef Initiative (ICRI).

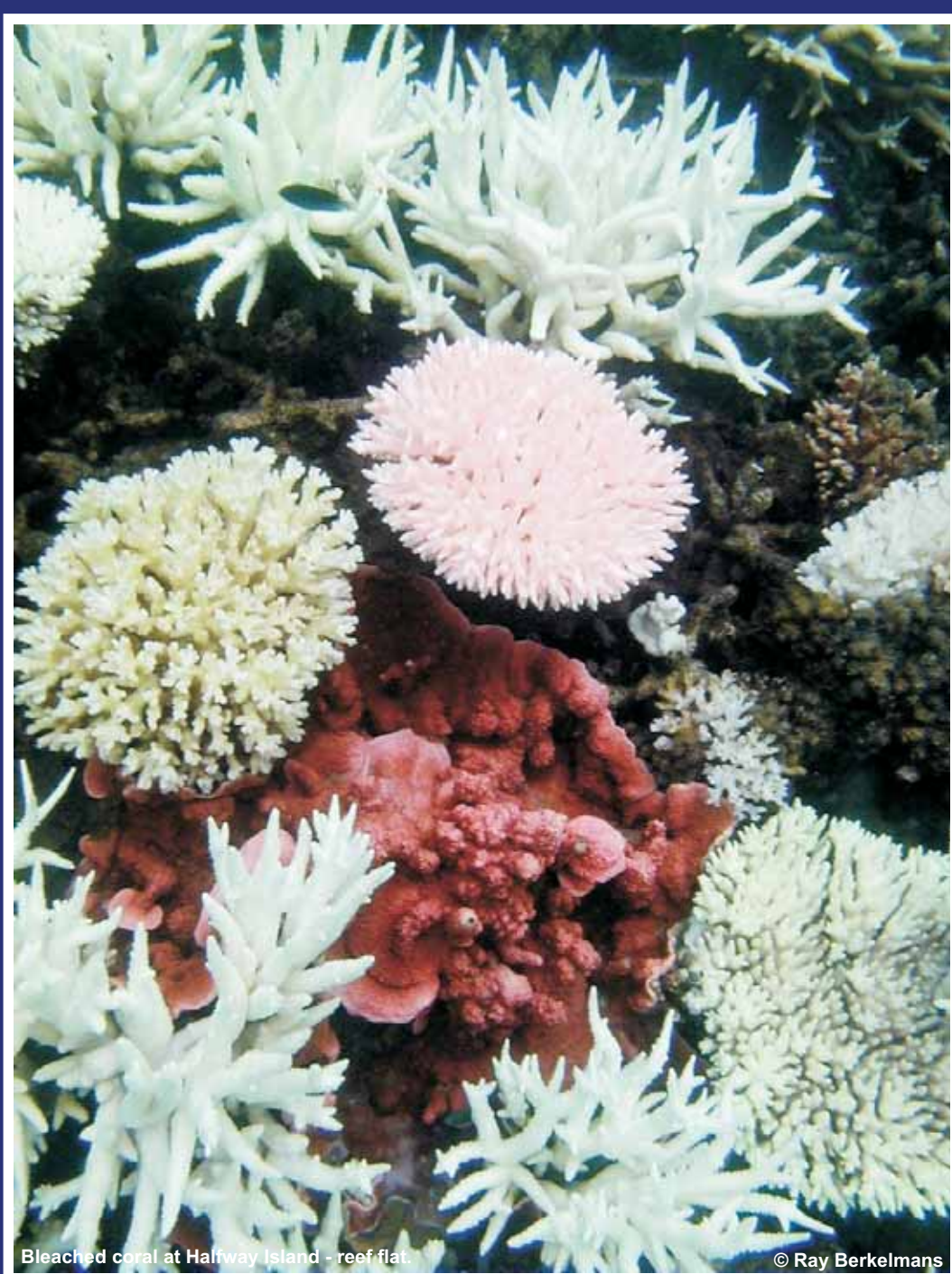
ICRI is a unique global partnership of people and organizations with a stake in the future of coral reefs. The representatives of more than 80 nations, major donor countries, development banks and international agencies all contribute with equal status.

ICRI aims to reverse the global degradation of coral reefs and related ecosystems such as mangroves and seagrasses to best achieve their sustainable use and conservation for future generations.

ICRI works through a series of international and regional workshops where members develop the best strategies to protect coral reefs and related coastal resources.

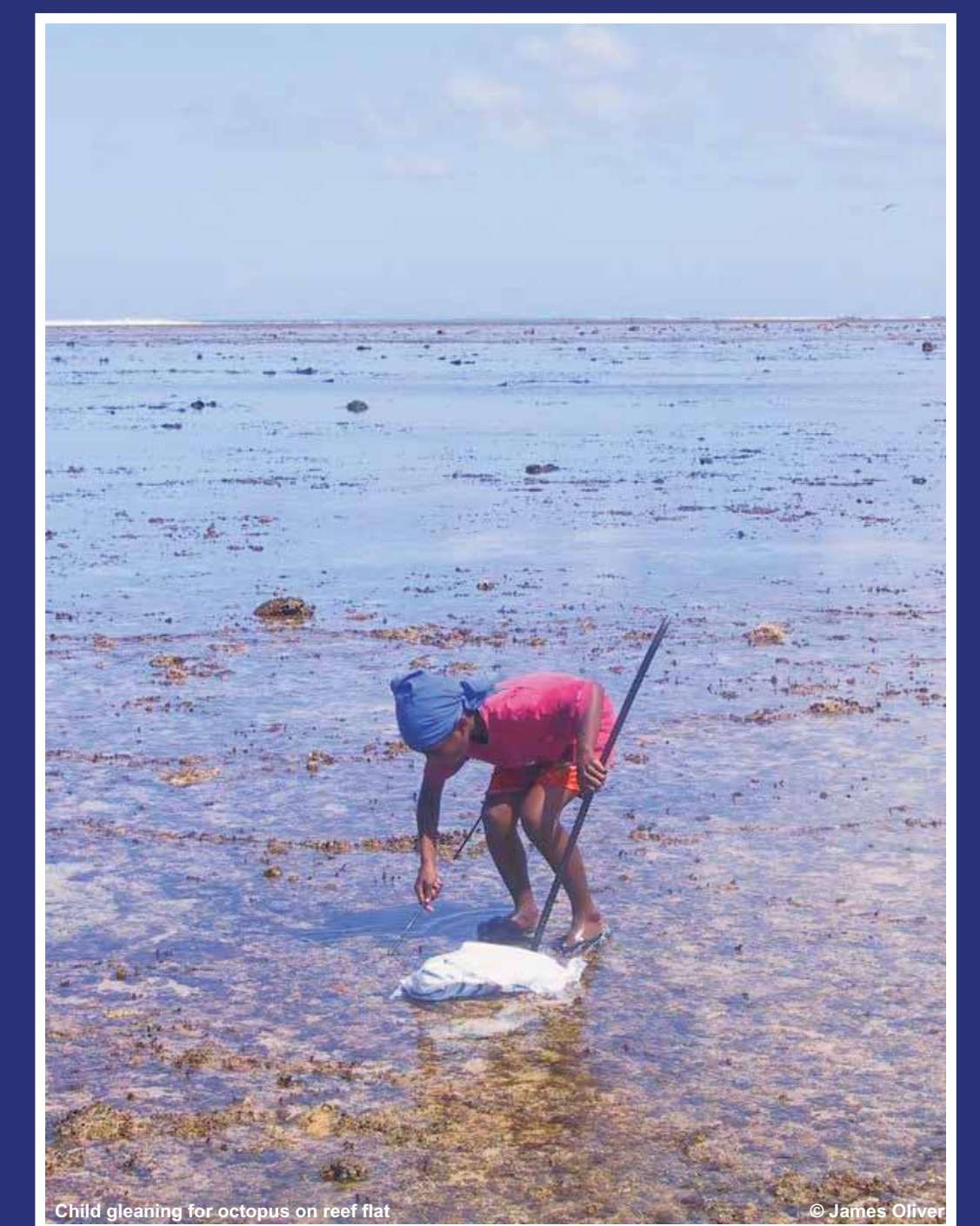
Conveying peoples needs

ICRI ensures that the needs of the developing world concerning their coral reefs are conveyed to operational and funding organizations.



Bleached coral at Halim's Island reef flat.

© Ray Berkelmans



Child gleaming for octopus on reef flat.

© James Oliver

Co-ordination and Planning

A Co-ordination and Planning Committee meets once or twice per year to advise the ICRI Secretariat, discuss emerging issues and provide direction to governments, conventions and ICRI's operational networks.

<http://icriforum.org>

Photos provided by ReefBase (<http://www.reefbase.org>).