

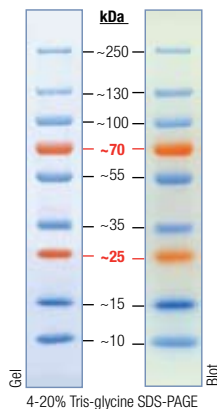
Migration patterns of PageRuler™ Plus Prestained Protein Ladder in different electrophoresis conditions

Gel type	Tris-Glycine						Tris-Acetate*		Bis-Tris*											
	Gel concentration		8-16%		10-20%		8% 10%		12%		15%		3-8% 7%		4-12%		10%		12%	
Running buffer	Tris-Glycine						Tris-Acetate		MOPS	MES	MOPS	MES	MOPS	MES	MOPS	MES	MOPS	MES	MOPS	MES
Apparent Molecular Weights, kDa																				
% length of gel ↓	10																			
	20	250	250	130	130	100	100	70	250	130	100	70	205	185	190	185	190	185	190	185
	30	130	130	100	100	70	70	55	130	100	70	55	120	115	115	115	115	115	115	115
	40	100	100	70	70	55	55	35	100	70	55	35	85	80	80	80	80	80	80	80
	50	70	70	55	55	35	35	25	70	55	35	25	85	80	80	80	80	80	80	80
	60	55	55	35	35	25	25	15	55	35	25	15	120	115	115	115	115	115	115	115
	70	35	35	25	25	15	15	10	35	25	15	10	85	80	80	80	80	80	80	80
	80	25	25	15	15	10	10	5	25	15	10	5	85	80	80	80	80	80	80	80
	90	15	15	10	10	5	5	2	15	10	5	2	85	80	80	80	80	80	80	80
	100	10	10	5	5	2	2	1	10	5	2	1	30	30	30	30	30	30	30	30

* Migration patterns were determined using respective NuPAGE® precast gels.

Note. The apparent molecular weight of each protein (kDa) has been determined by calibration against an unstained protein ladder in each electrophoresis conditions.

PageRuler™ Plus Prestained Protein Ladder, #SM1811



Features

- Sharp bands
- Stable colors
- Bright reference bands
- Broad range
- Ready-to-use – supplied in a loading buffer for direct loading on gels

Applications

- Monitoring protein migration during SDS-polyacrylamide gel electrophoresis
- Monitoring protein transfer onto membranes after Western blotting
- Sizing of proteins on SDS-polyacrylamide gels and Western blots

Recommendations for Loading:

Step1: Thaw the Ladder either at room temperature or at 37°C for a few minutes to dissolve precipitated solids.

Step2: Mix gently, but thoroughly, to ensure that the solution is homogeneous.

Step3: Load on SDS-polyacrylamide gel
for mini-gels with a thickness of 0.75-1 mm: 5 µl/well*
for large gels with a thickness of 0.75-1 mm: 10 µl/well*

* For thicker gels, the loading volume should be increased.

Product	Catalog #	Amount	Applications		MW range, kDa	PageBlue™ staining (#R0571)	PageSilver™ staining (#K0681)
			mini-gels 5 µl/well	large gels 10 µl/well			
PageRuler™ Plus Prestained Protein Ladder	SM1811	2x250 µl	100	50	10-250	compatible	compatible