

ARRIVE EARLY

Plan your trip so that you're at the venue well before the scheduled start of the event. Gates open **two hours** before the start of competition at city venues and **three hours** before the start of competition at Whistler and Cypress Mountain venues. Gates open **four hours** prior to the start of the Opening and Closing Ceremonies.

GO CAR-FREE

As there is no spectator parking at any Olympic venue, public transportation is the best way to go. Don't forget to reserve your seat on the Olympic bus network for Whistler and Cypress Mountain events. See **page 38** for more information on Games-time transportation.

DRESS APPROPRIATELY

Dress for cold and wet weather — warmly, in layers and in waterproof clothing. Remember to wear suitable footwear as you may have to walk on uneven, snowy or icy surfaces.

HAVE YOUR TICKETS READY

Be sure to have your tickets with you as you must have a valid ticket to enter a venue. Treat your tickets like cash; lost or stolen tickets will not be replaced or refunded.



PREPARE FOR THE SECURITY SCREENING

Avoid taking large bags to the venues. If you are unsure of what you can and cannot bring with you, check the prohibited and restricted items list on **page 28**.

YOUR PAYMENT OPTIONS

Visa cards and cash are the only methods of payment accepted at Olympic venues.

ACCESSIBILITY

All venues have been reviewed for accessibility. If you have a specific need, see the nearest staff member for assistance.

BE INFORMED

At the venue, look for wayfinding signage, listen to announcements and read the message boards — this will provide you with the information you need to make the most of your experience. Is there still something you need to know? Don't hesitate to visit our information booths located at each venue.



Freestyle
Skiing



Snowboard

CYPRESS MOUNTAIN

GATES OPEN THREE HOURS PRIOR TO THE START OF COMPETITION.

GETTING HERE



From Vancouver



Take the Olympic bus network from the Capilano University departure hub in North Vancouver (see [page 52](#)), from the Simon Fraser University departure hub in Burnaby (see [page 53](#)) **OR** from the Lonsdale Quay transfer hub (see [page 58](#)).



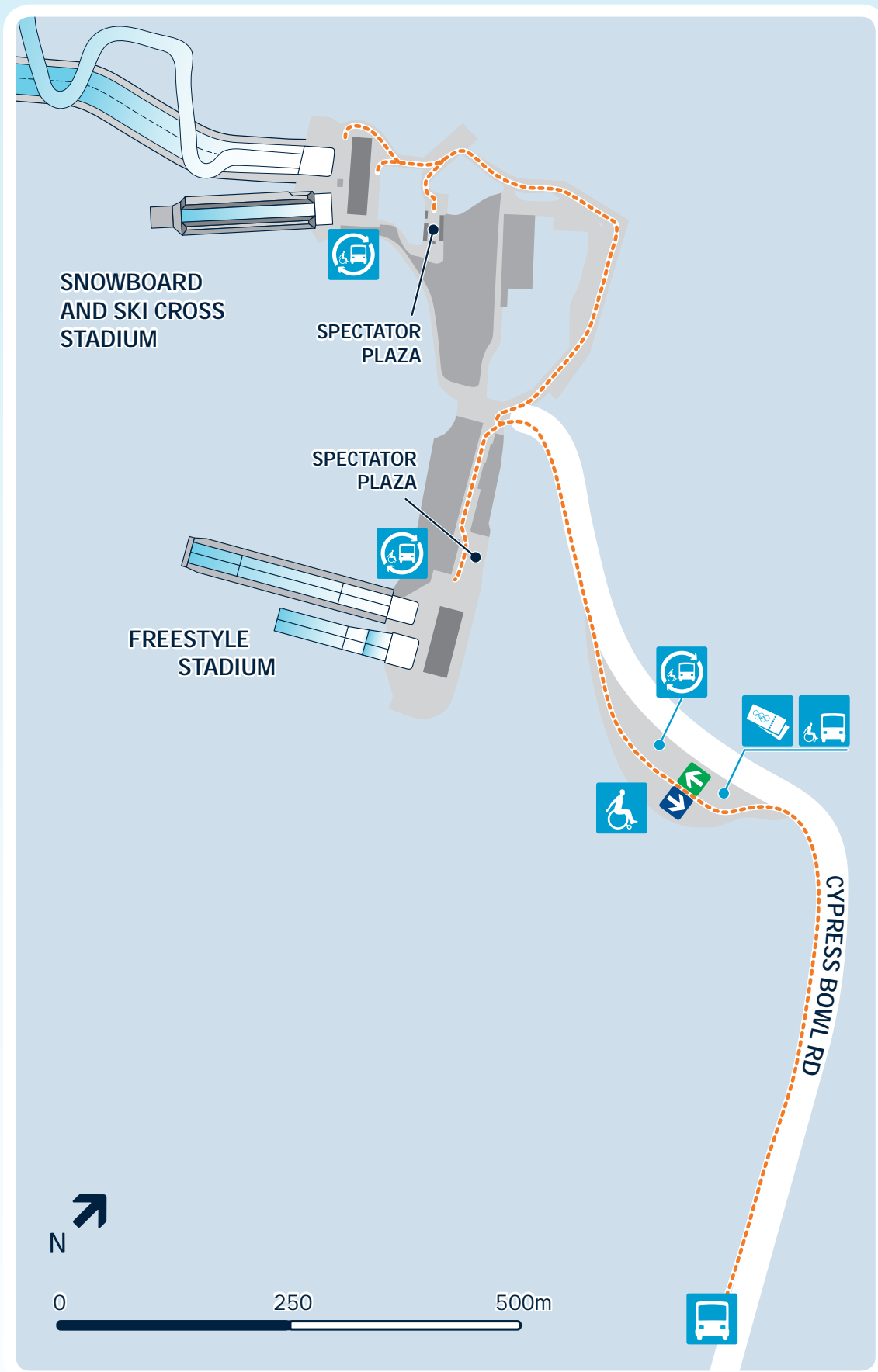
Travel time to venue

From Capilano University: at least 40 minutes. From Simon Fraser University: 60 minutes. From Lonsdale Quay: 30 minutes.

From the Olympic bus network drop-off point, you'll be required to walk 1.6 kilometres on snow to reach the freestyle stadium and 2 kilometres to reach the entrance of the snowboard and ski cross stadium. The last portion of the walk to the snowboard and ski cross stadium is uphill and includes a set of stairs which you'll need to climb in order to reach the viewing areas.

Tip As this is a mountain venue with limited shelter, you could be outside for several hours. Be prepared for extremely cold and wet weather.







TICKETS

The ticket box office is located just before the entrance to the venue.

Spectators with category A tickets have the right to reserved grandstand seating. Spectators with category B tickets are entitled to general admission standing.



INFORMATION

Visit the information booth located in the spectator plaza at each stadium if you have any questions concerning venue and competition information, tourist information or ticket resolution issues. Lost and found is also located at the information booth.



ACCESSIBILITY

An accessible bus will drop off spectators with specific needs, plus one companion, approximately 50 metres from the entrance. Once in the venue, spectators will take a shuttle to each stadium, which will leave them approximately 50 metres from the seating areas.



DO

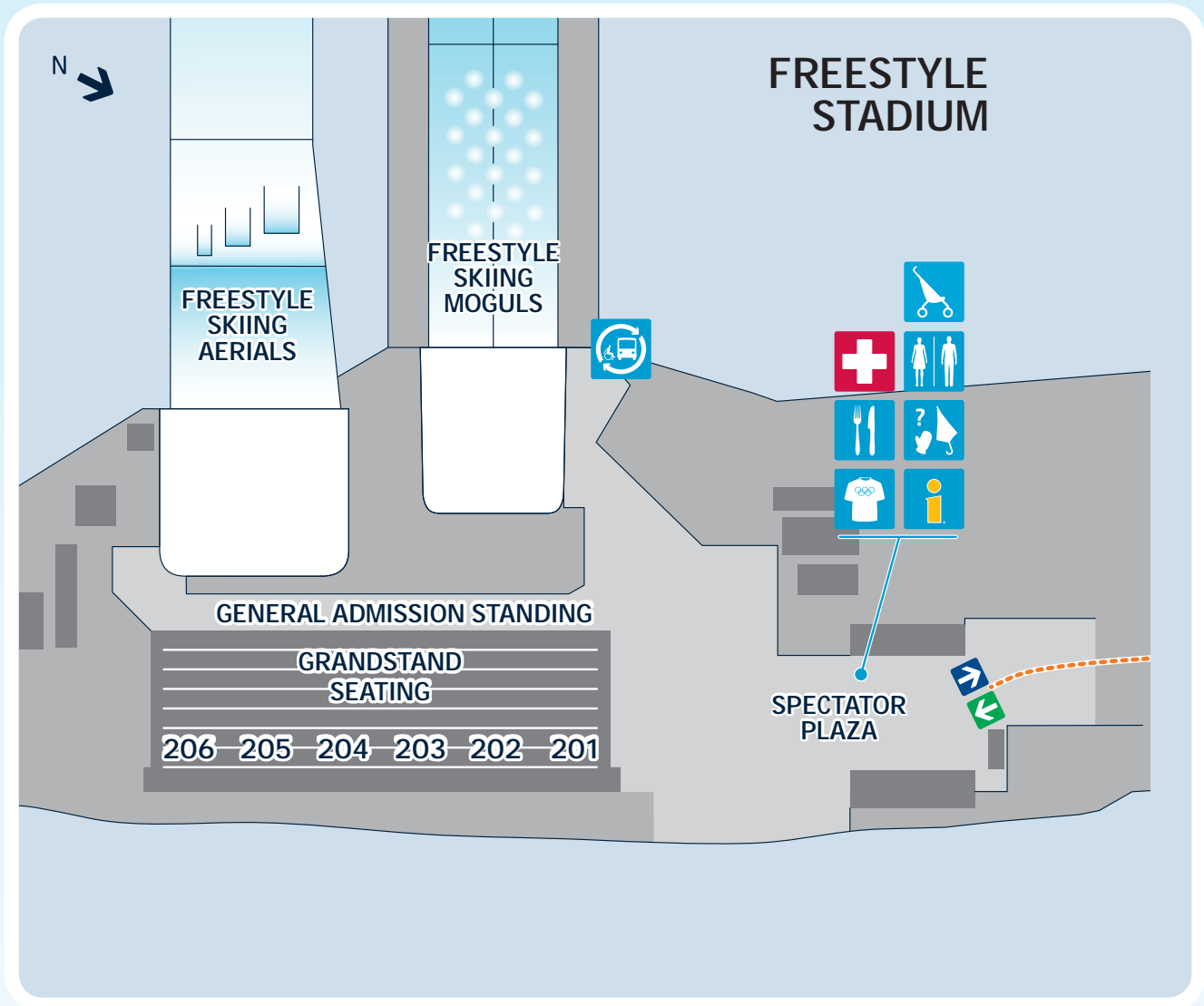
Dress appropriately — wear layers, and if you have grandstand seating, wear warm pants. Wear appropriate footwear to walk on snow and ice around the venue.



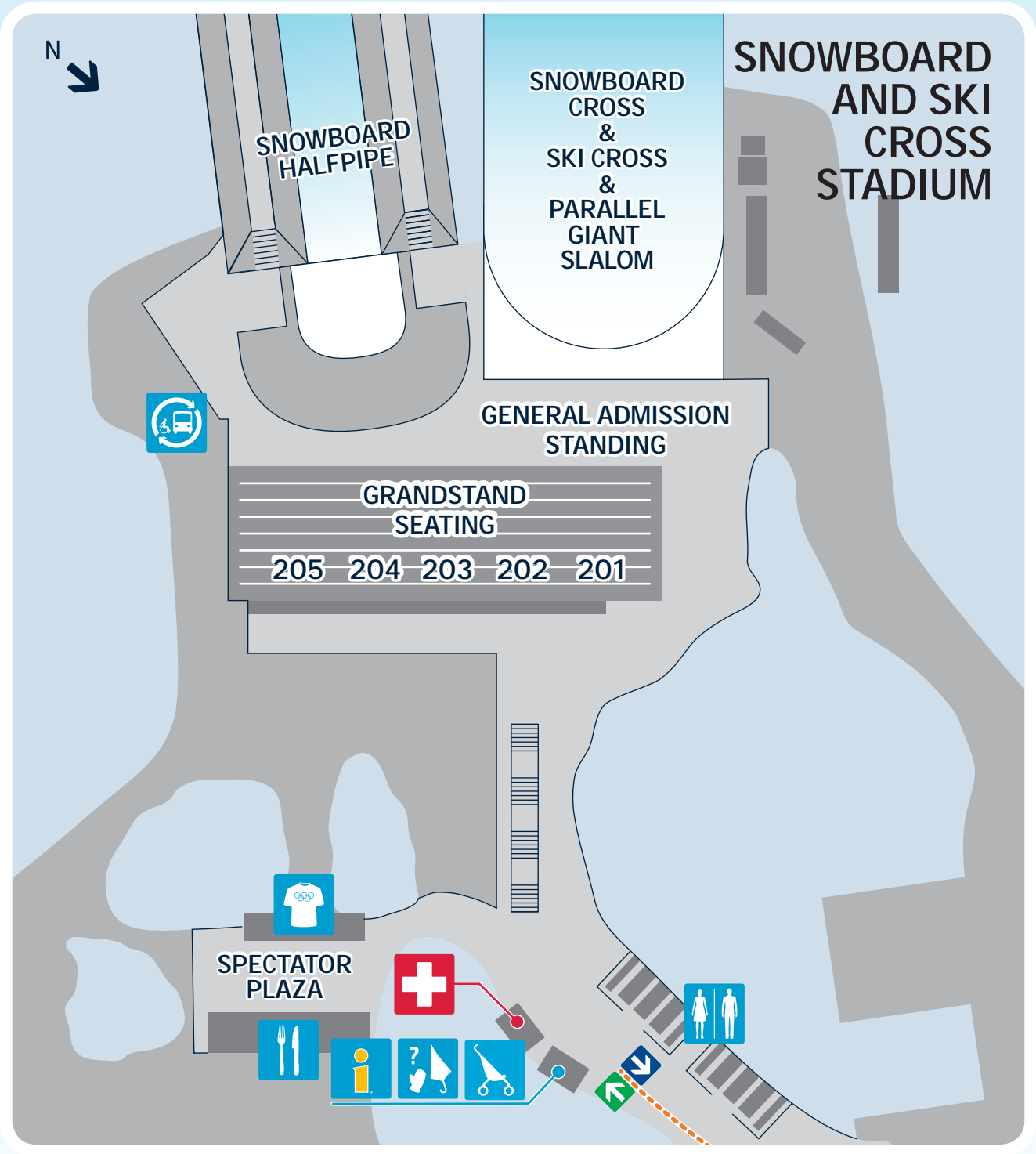
DON'T

Please remember that leaving and re-entering the venue is not permitted.





DID YOU KNOW in the summer of 2007, VANOC employees and volunteers worked with community partners to salvage and relocate locally significant wetland plant species from the venue's new snowmaking reservoir site to similar habitat bordering on a stretch of the Howe Sound Crest Trail?



TO CYPRESS MOUNTAIN AND WHISTLER VENUES

THE OLYMPIC BUS NETWORK

The Olympic bus network is the quickest way for spectators from Metro Vancouver to be transported to Cypress Mountain and Whistler venues from a network of departure hubs. After each competition, you will be transported back to your originating departure point. To reserve a seat on the bus, you must purchase an Olympic bus network transportation ticket. **Only Olympic event ticket holders may reserve seats on the Olympic bus network.**

You can take public transportation, rideshare/carpool or drive to a **departure hub** located at the British Columbia Institute of Technology (BCIT), Capilano University, Simon Fraser University (SFU) and Langara College.

There is also a **transfer hub** at Lonsdale Quay. This hub is only accessible by public transportation, including the SeaBus. There is no spectator parking available at this hub.



Do not show up at a departure hub without a reservation.

You will need a reservation to gain access to parking at the departure hub and to board an Olympic network bus.

Do not park along roadways in residential neighbourhoods, near a departure hub or in a departure hub not associated with your venue destination. **Strict towing policies will be enforced.**

Do not drive to the venue as there will be no spectator parking.

Tip The Olympic bus network only serves spectators going from the Vancouver area to Cypress Mountain and Whistler venues. If you are coming from the Whistler area to Vancouver, you can use charter bus service. For more information see [page 59](#) and [whistler.com](#).

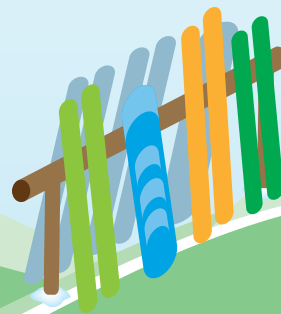


Olympic bus network transportation tickets

Olympic bus network transportation tickets are sold separately from Olympic event tickets. With the purchase of a transportation ticket, you reserve a round-trip seat to Cypress Mountain or a Whistler venue and receive complimentary parking at a designated departure hub through the Click and Park online reservation system.

When you book your **round-trip** seat on the Olympic bus network, you will receive confirmation of your departure date and time, bus departure location and if applicable, your parking reservation. It is very important to arrive on time to your departure hub; otherwise, you could miss your bus and your event.

For Olympic event ticket holders whose trip originates in Vancouver, there will be a round-trip cost associated with booking a seat on the Olympic bus network. We recommend that you book your seat early to get your preferred departure time and rate. Rates are subject to change. For more information or to purchase your seat, visit departurehubs.clickandpark.com.





DEPARTURE HUB FOR CYPRESS MOUNTAIN

Capilano University
2055 PURCELL WAY, NORTH VANCOUVER



GETTING HERE



By public transit

BUS ROUTES: 28, 130, 239, 255 to Capilano University Exchange
Allow at least 60 minutes' travel time from downtown Vancouver.



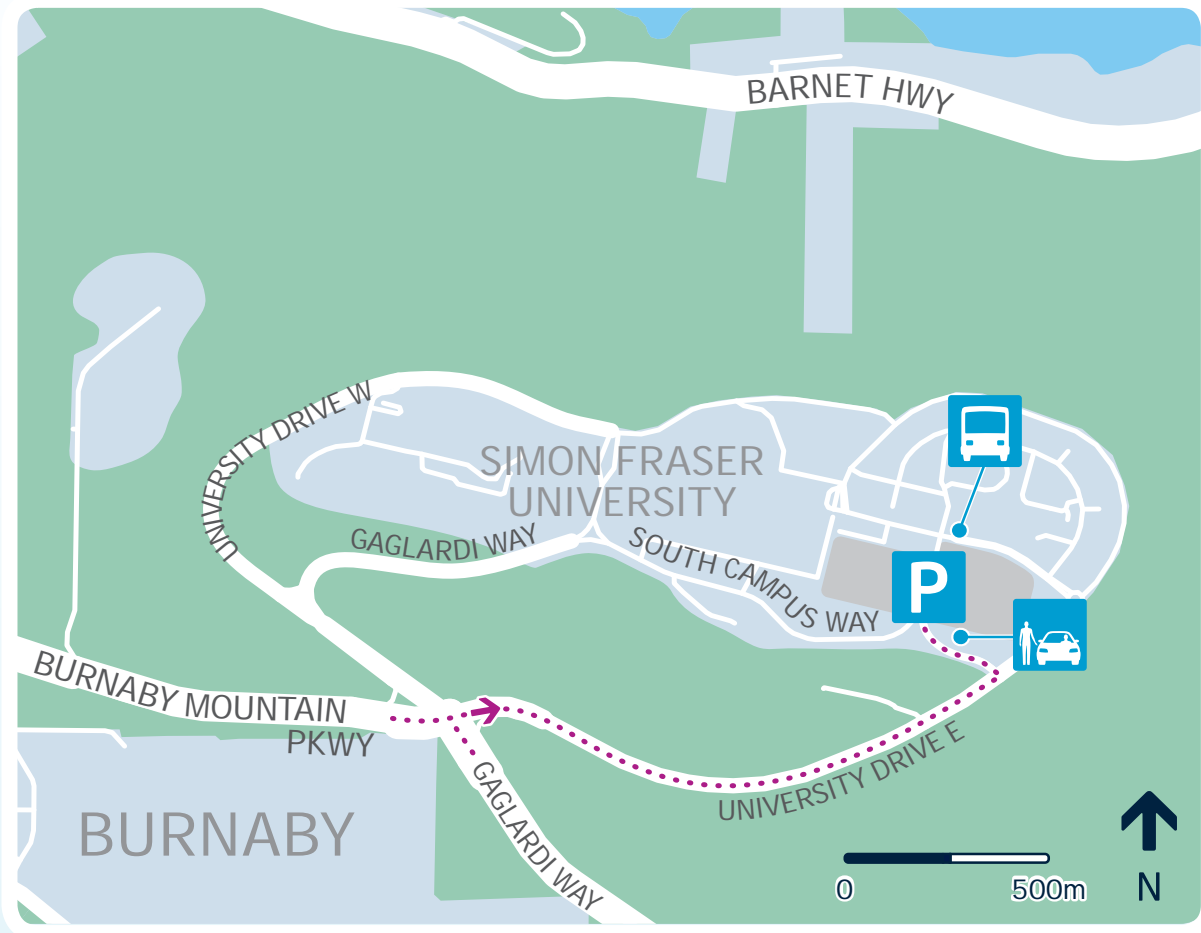
By rideshare/carpool

FROM HIGHWAY 1 (TRANS-CANADA HIGHWAY): take exit 22A (Lillooet Road/Mount Seymour Parkway), proceed on Lillooet Road and follow directional signs or parking staff to lot.



DEPARTURE HUB FOR CYPRESS MOUNTAIN

Simon Fraser University (SFU)
8888 UNIVERSITY DRIVE, BURNABY



GETTING HERE



By public transit

BUS ROUTES: 135, 143, 144, 145, N35 to SFU Transit Exchange
Allow at least 60 minutes' travel time from downtown Vancouver.



By rideshare/carpool

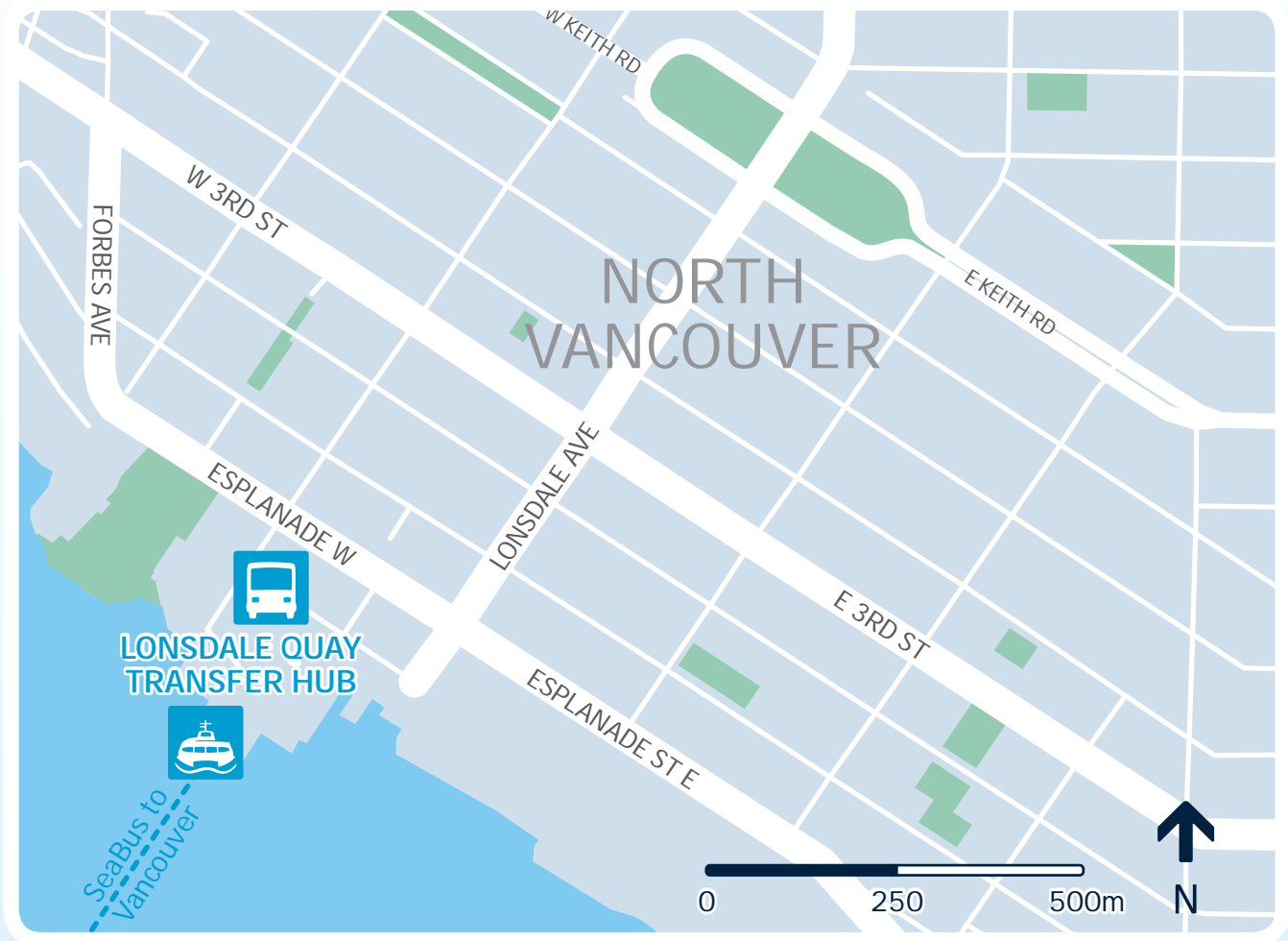
FROM HIGHWAY 1 (TRANS-CANADA HIGHWAY): take exit 37 (Gaglardi Way north). Follow directional signs or parking staff to lot.

FROM BURNABY: take Lougheed Highway to Burnaby Mountain Parkway. Follow the Parkway to Gaglardi Way. Follow directional signs or parking staff to lot.



TRANSFER HUB FOR CYPRESS MOUNTAIN AND THE WHISTLER SLIDING CENTRE

Lonsdale Quay
NORTH VANCOUVER



GETTING HERE



By public transit

SeaBus from Waterfront station in downtown Vancouver
Allow 12 minutes' travel time by SeaBus.



BUS ROUTES: 228, 229, 230, 236, 239, 246, N24 to Lonsdale Quay



Do not drive or rideshare/carpool to this transfer hub
as there is no parking for Olympic spectators.