

ARRIVE EARLY

Plan your trip so that you're at the venue well before the scheduled start of the event. Gates open **two hours** before the start of competition at city venues and **three hours** before the start of competition at Whistler and Cypress Mountain venues. Gates open **four hours** prior to the start of the Opening and Closing Ceremonies.

GO CAR-FREE

As there is no spectator parking at any Olympic venue, public transportation is the best way to go. Don't forget to reserve your seat on the Olympic bus network for Whistler and Cypress Mountain events. See **page 38** for more information on Games-time transportation.

DRESS APPROPRIATELY

Dress for cold and wet weather — warmly, in layers and in waterproof clothing. Remember to wear suitable footwear as you may have to walk on uneven, snowy or icy surfaces.

HAVE YOUR TICKETS READY

Be sure to have your tickets with you as you must have a valid ticket to enter a venue. Treat your tickets like cash; lost or stolen tickets will not be replaced or refunded.



PREPARE FOR THE SECURITY SCREENING

Avoid taking large bags to the venues. If you are unsure of what you can and cannot bring with you, check the prohibited and restricted items list on **page 28**.

YOUR PAYMENT OPTIONS

Visa cards and cash are the only methods of payment accepted at Olympic venues.

ACCESSIBILITY

All venues have been reviewed for accessibility. If you have a specific need, see the nearest staff member for assistance.

BE INFORMED

At the venue, look for wayfinding signage, listen to announcements and read the message boards — this will provide you with the information you need to make the most of your experience. Is there still something you need to know? Don't hesitate to visit our information booths located at each venue.

The background features a stylized landscape with layered blue mountains, green and brown rolling hills, and a blue river winding through the foreground. Three white birds are flying in the upper right sky area, and a single evergreen tree is visible on a distant peak.

GETTING THERE

KNOW BEFORE YOU GO 39

GETTING AROUND METRO VANCOUVER 42

TO CYPRESS MOUNTAIN
AND WHISTLER VENUES 48

GETTING AROUND WHISTLER 59

5 THINGS TO REMEMBER ABOUT TRANSPORTATION

1 There is **NO** spectator parking at any Olympic venue.

2 **Public transportation is accessible to all** and is the quickest, most reliable way to go. Access to public transit is included in your Olympic ticket for the day of the event.

3 **Know before you go.** Give yourself plenty of time to reach your venue.

4 **Cypress Mountain and Whistler venues can be reached on the Olympic bus network** if you're coming from Metro Vancouver. The purchase of a transportation ticket is required. See **page 48** for details.

5 **Walk, bike and use public transportation whenever possible.** Using these modes will ensure you get to your destination while contributing to a greener, more sustainable Games.



KNOW BEFORE YOU GO



SHOW YOUR OLYMPIC EVENT TICKET AND RIDE FOR FREE*

Your ticket entitles you to **free and unlimited travel** on all public transit on the day of your event, through to 04:00 the next morning. Use your free public transit privileges to take advantage of sightseeing, Olympic celebrations and other attractions on the same day.



TRANSIT PASSES FOR TRAVELLING IN YOUR FREE TIME

To get around Metro Vancouver (TransLink) and Whistler (BC Transit) on days when you are not attending an Olympic event, you can purchase a variety of passes from TransLink and BC Transit. For more information, visit translink.ca and bctransit.com.



Buy a souvenir Olympic transit pass. TransLink offers a limited-edition pass for travel before, during and after the Games. BC Transit offers a souvenir Olympic transit pass good for travel during the month of February.

* On TransLink and BC Transit systems.



BARRIER-FREE TRANSPORTATION

VANOC's transportation partners are committed to providing accessible transportation services throughout the Games. All transportation systems, including public transportation and services to venues through the Olympic bus network, are accessible.

In Metro Vancouver, HandyDART custom transit services take you from your residence to your venue or Olympic bus network departure hub. HandyDART is a shared ride service that requires pre-registration and confirmation of disability. For more information, please call 1 604 453 4634 or visit translink.ca.

Note: All TransLink and BC Transit buses are accessible.

Tip Please respect residential neighbourhoods and be advised that parking will not be allowed in these areas.





RIDESHARE/CARPOOL

If you are driving to a departure hub, please consider carpooling. Visit ride-share.com to connect with others going to the same event and travel together.



TRANSLINK PARK & RIDE LOTS

In Metro Vancouver public parking space may be available near some TransLink stations where you can leave your vehicle and take a bus or rapid transit. Keep in mind there will be significant demand for these parking spaces. Carpooling is strongly recommended. Refer to the TransLink website (translink.ca) for information on its Park & Ride locations, then connect with carpoolers at ride-share.com.

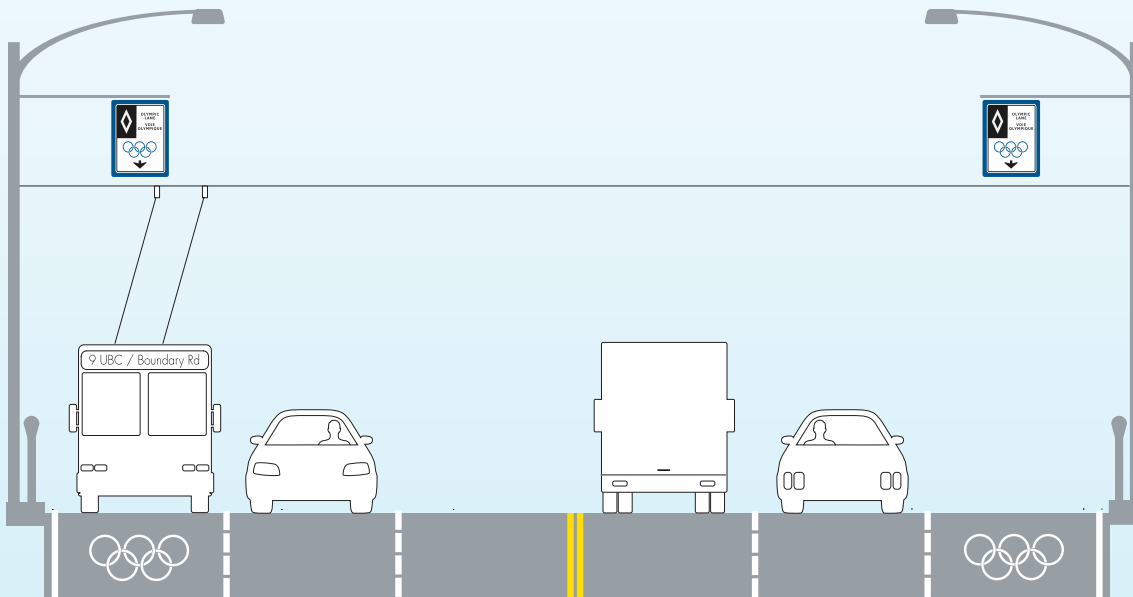


OLYMPIC LANES

These specially marked lanes are **reserved exclusively for use by Olympic-accredited vehicles** (such as those carrying the athletes) and TransLink buses.



Do not drive in the Olympic lanes.



GETTING AROUND METRO VANCOUVER

PUBLIC TRANSIT

translink.ca

Vancouver and its suburbs (collectively known as Metro Vancouver) are served by TransLink's system of buses, commuter railway and automated rapid transit lines. Access to public transit is included with your Olympic ticket for the day of the event.

Waterfront station, located in downtown Vancouver, is a major hub for TransLink services. From here you'll be able to walk to BC Place and Canada Hockey Place along pedestrian corridors — as well as access public transportation to get to all the venues.

At Games time, public transit capacity and hours of service will increase, including on weekends and late at night. On the following page is a list of public transit options.





Rapid transit

The rapid transit system includes the Expo, Millennium and Canada Lines which run every few minutes.



SeaBus

The SeaBus provides passenger ferry service from Waterfront station in downtown Vancouver to Lonsdale Quay in North Vancouver. Crossing between the two terminals takes 12 minutes. Both terminals provide connections to other transit services.



Olympic Line — Vancouver's 2010 Streetcar*

vancouver.ca

City of Vancouver streetcars operate between January 21 and March 21. They run every six to 12 minutes and connect the Canada Line (at Olympic Village station) to Granville Island. *Olympic Line streetcars are free of charge.



West Coast Express

This passenger railway links downtown Vancouver (at Waterfront station) with suburbs to the east.



Buses

An extensive network of bus services operate throughout the region.

TRANSIT STOPS AND BUS ROUTES FOR CITY VENUES

BC PLACE

SUGGESTED STOPS

Stadium–Chinatown (Expo Line/Millennium Line)
Vancouver City Centre (Canada Line)

ALTERNATIVE STOPS

Main Street–Science World (Expo Line/Millennium Line)
Yaletown Roundhouse (Canada Line)
Waterfront (Expo Line/Millennium Line)
Granville (Expo Line/Millennium Line)

CANADA HOCKEY PLACE

SUGGESTED STOPS

Stadium–Chinatown (Expo Line/Millennium Line)
Vancouver City Centre (Canada Line)

ALTERNATIVE STOPS

Main Street–Science World (Expo Line/Millennium Line)
Yaletown Roundhouse (Canada Line)
Waterfront (Expo Line/Millennium Line)
Granville (Expo Line/Millennium Line)

PACIFIC COLISEUM

SUGGESTED STOP

Hastings Street at Lillooet Street
(via bus 135 or Games Express route
from SkyTrain)

RICHMOND OLYMPIC OVAL

SUGGESTED STOP

Aberdeen station (Canada Line)

SUGGESTED BUS ROUTES

401, 407

Tip Timing is everything. Ensure you give yourself sufficient time to travel to your venue and go through security screening and ticket checking. It could take a considerable amount of time to reach your seat — if you arrive too close to the start of an event, you may miss it.

TRANSIT STOPS AND BUS ROUTES FOR CITY VENUES

UBC THUNDERBIRD ARENA

SUGGESTED STOP

UBC Bus Loop (via route 99 B-Line to UBC)

SUGGESTED BUS ROUTES

4, 9, 17, 25, 33, 41, 43, 44, 49, 480, N17

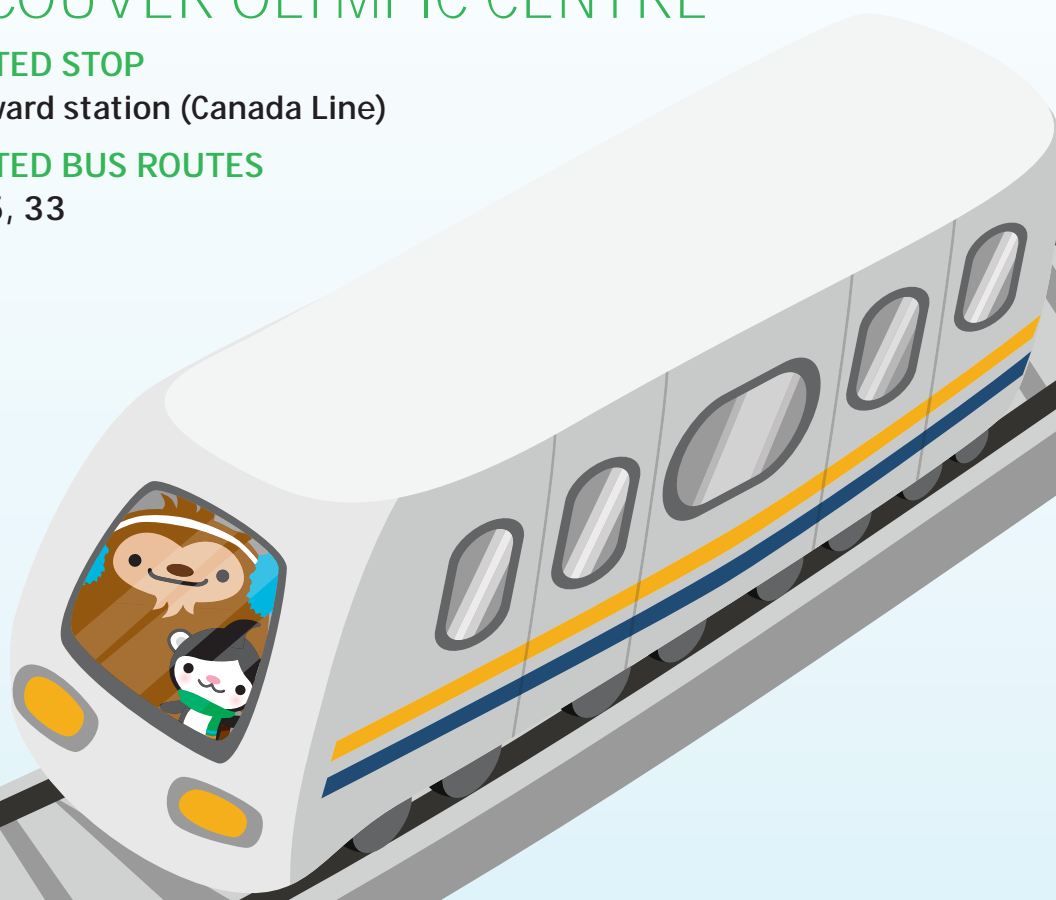
VANCOUVER OLYMPIC CENTRE

SUGGESTED STOP

King Edward station (Canada Line)

SUGGESTED BUS ROUTES

3, 15, 25, 33



For TransLink routes, schedule information and help with your travel planning, visit translink.ca or call the Customer Information Centre at 1 604 953 3333.

MORE WAYS TO GET AROUND VANCOUVER



Walking

vancouver.ca

Vancouver is a wonderful city to get around on foot, and walking is a perfect option if you are downtown. Check out the pedestrian corridors. In downtown Vancouver, these are public streets that are blocked off only for walking from noon to midnight. Pedestrian corridors provide easy walking and fun places to celebrate the Games.



Bicycling

vancouver.ca + translink.ca

Vancouver usually enjoys mild winters, allowing locals and visitors to get around by bicycle. Take advantage of the numerous cycling routes and bike parking facilities near Games venues. See the **Venues** section for bike route connections to venues.

GETTING AROUND RICHMOND

**Walking**

richmond.ca

Walk over the Canada Line Bridge, which has a separate pedestrian/bike path under the guideway, and discover Richmond's extensive waterfront trails. Walk from the Richmond Olympic Oval to the O Zone Celebration Site, only 15 minutes away.

**Bicycling**

richmond.ca/cycling

Take advantage of the city's off-street trails and on-street cycling networks by cycling over the Canada Line Bridge's pedestrian/bike path. The Richmond Olympic Oval is a 15-minute ride from the Canada Line Bridge. Other bridge crossings from Vancouver are the Arthur Laing Bridge, Oak Street Bridge and Knight Street Bridge.

TO CYPRESS MOUNTAIN AND WHISTLER VENUES

THE OLYMPIC BUS NETWORK

The Olympic bus network is the quickest way for spectators from Metro Vancouver to be transported to Cypress Mountain and Whistler venues from a network of departure hubs. After each competition, you will be transported back to your originating departure point. To reserve a seat on the bus, you must purchase an Olympic bus network transportation ticket. **Only Olympic event ticket holders may reserve seats on the Olympic bus network.**

You can take public transportation, rideshare/carpool or drive to a **departure hub** located at the British Columbia Institute of Technology (BCIT), Capilano University, Simon Fraser University (SFU) and Langara College.

There is also a **transfer hub** at Lonsdale Quay. This hub is only accessible by public transportation, including the SeaBus. There is no spectator parking available at this hub.



Do not show up at a departure hub without a reservation.

You will need a reservation to gain access to parking at the departure hub and to board an Olympic network bus.

Do not park along roadways in residential neighbourhoods, near a departure hub or in a departure hub not associated with your venue destination. **Strict towing policies will be enforced.**

Do not drive to the venue as there will be no spectator parking.

Tip The Olympic bus network only serves spectators going from the Vancouver area to Cypress Mountain and Whistler venues. If you are coming from the Whistler area to Vancouver, you can use charter bus service. For more information see [page 59](#) and [whistler.com](#).

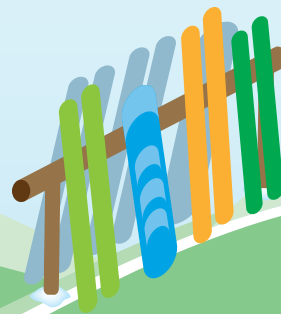


Olympic bus network transportation tickets

Olympic bus network transportation tickets are sold separately from Olympic event tickets. With the purchase of a transportation ticket, you reserve a round-trip seat to Cypress Mountain or a Whistler venue and receive complimentary parking at a designated departure hub through the Click and Park online reservation system.

When you book your **round-trip** seat on the Olympic bus network, you will receive confirmation of your departure date and time, bus departure location and if applicable, your parking reservation. It is very important to arrive on time to your departure hub; otherwise, you could miss your bus and your event.

For Olympic event ticket holders whose trip originates in Vancouver, there will be a round-trip cost associated with booking a seat on the Olympic bus network. We recommend that you book your seat early to get your preferred departure time and rate. Rates are subject to change. For more information or to purchase your seat, visit departurehubs.clickandpark.com.





OLYMPIC BUS NETWORK DEPARTURE AND TRANSFER HUBS

Know before you go where your venue's departure hub is and how to get there.

Carefully follow the directional signs around the departure hub.

CYPRESS MOUNTAIN

Capilano University (North Vancouver) **p52**

Simon Fraser University (Burnaby) **p53**

Lonsdale Quay transfer hub* **p58**

WHISTLER OLYMPIC PARK

BC Institute of Technology (Burnaby) **p54**

THE WHISTLER SLIDING CENTRE

BC Institute of Technology (Burnaby) **p54**

Lonsdale Quay transfer hub* **p58**

WHISTLER CREEKSIDE

Langara College (Vancouver) **p56**



Check public transit options to get to your departure and transfer hubs. Depending on where you're coming from, it might be easier to use public transportation to get there. For TransLink routes, schedule information and help with your travel planning, visit translink.ca or call the Customer Information Centre at 1 604 953 3333.

*Lonsdale Quay transfer hub can only be reached by public transportation. There is no parking at this hub.



WHISTLER OLYMPIC PARK



Whistler



THE WHISTLER SLIDING CENTRE



WHISTLER CREEKSIDE

Squamish

Howe Sound



CYPRESS MOUNTAIN



LONSDALE QUAY



CAPILANO UNIVERSITY



Vancouver



SIMON FRASER UNIVERSITY
BC

INSTITUTE OF TECHNOLOGY

Strait of Georgia



LANGARA COLLEGE

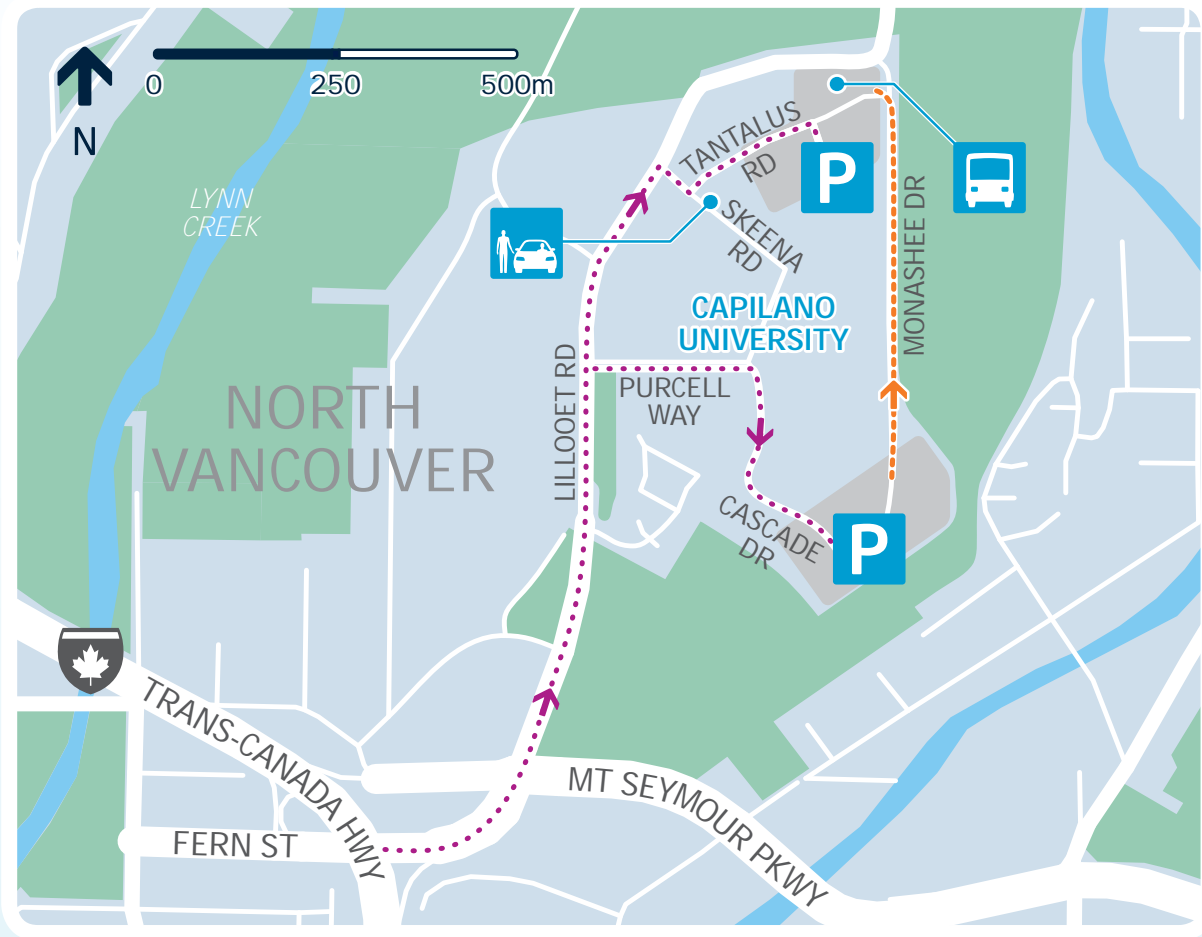
Richmond



DEPARTURE HUB FOR CYPRESS MOUNTAIN

Capilano University

2055 PURCELL WAY, NORTH VANCOUVER



GETTING HERE



By public transit

BUS ROUTES: 28, 130, 239, 255 to Capilano University Exchange
Allow at least 60 minutes' travel time from downtown Vancouver.



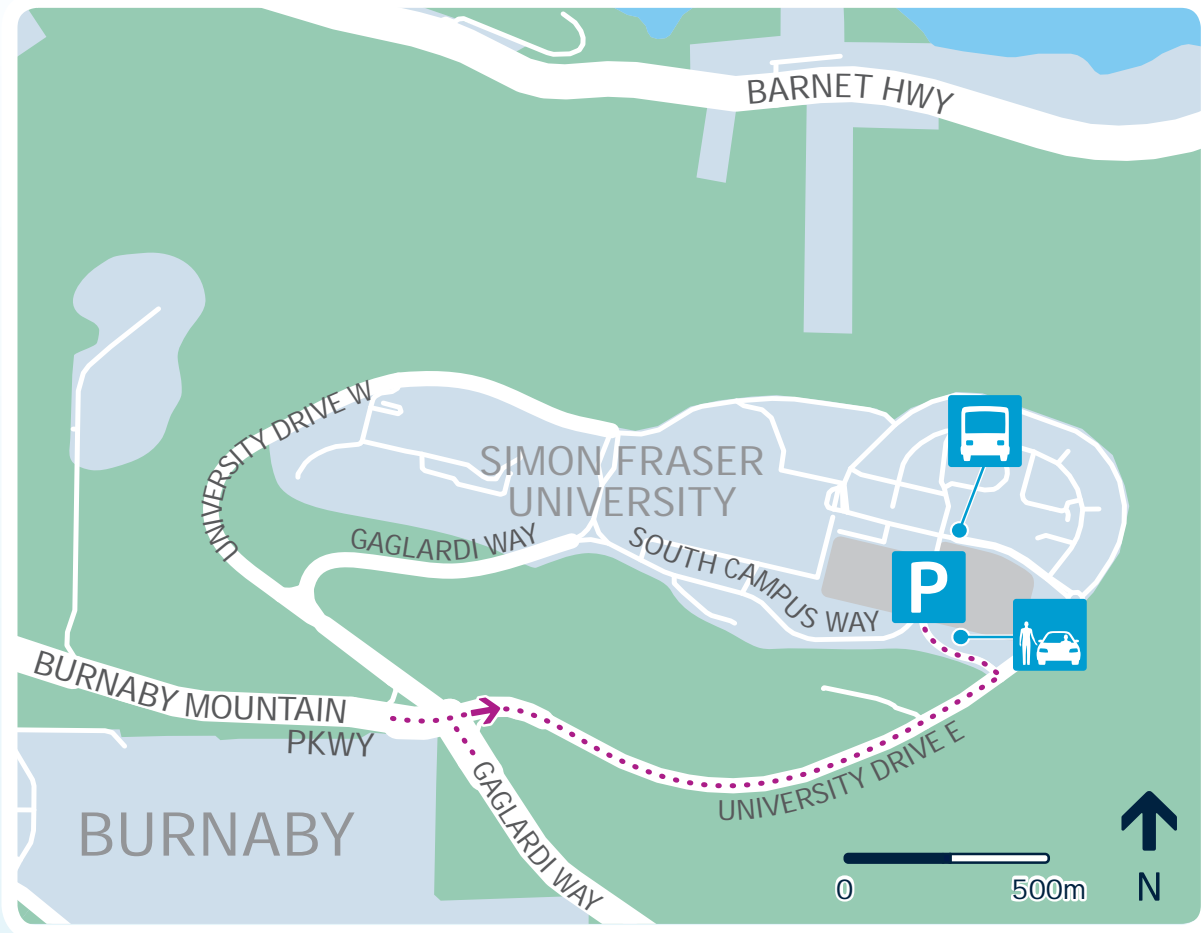
By rideshare/carpool

FROM HIGHWAY 1 (TRANS-CANADA HIGHWAY): take exit 22A (Lillooet Road/Mount Seymour Parkway), proceed on Lillooet Road and follow directional signs or parking staff to lot.



DEPARTURE HUB FOR CYPRESS MOUNTAIN

Simon Fraser University (SFU)
8888 UNIVERSITY DRIVE, BURNABY



GETTING HERE



By public transit

BUS ROUTES: 135, 143, 144, 145, N35 to SFU Transit Exchange
Allow at least 60 minutes' travel time from downtown Vancouver.



By rideshare/carpool

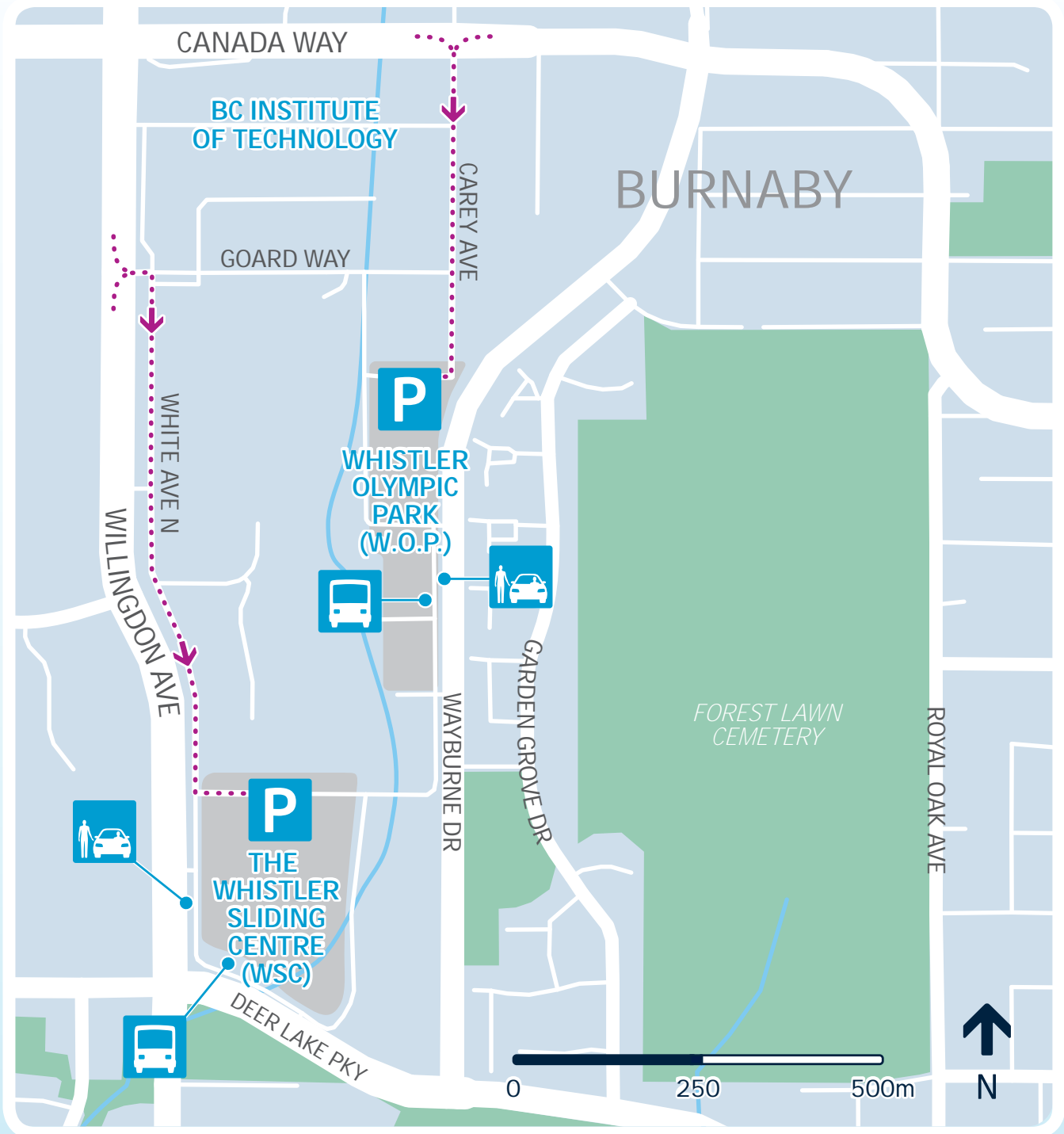
FROM HIGHWAY 1 (TRANS-CANADA HIGHWAY): take exit 37 (Gaglardi Way north). Follow directional signs or parking staff to lot.

FROM BURNABY: take Lougheed Highway to Burnaby Mountain Parkway. Follow the Parkway to Gaglardi Way. Follow directional signs or parking staff to lot.



DEPARTURE HUB FOR WHISTLER OLYMPIC PARK AND THE WHISTLER SLIDING CENTRE

BC Institute of Technology (BCIT)
3700 WILLINGDON AVENUE, BURNABY



WHISTLER OLYMPIC PARK AND THE WHISTLER SLIDING CENTRE

GETTING HERE



By public transit

BUS ROUTES: 25, 123, 130

These buses connect to SkyTrain Expo and Millennium Lines.

Allow at least 60 minutes' travel time from downtown Vancouver.



By rideshare/carpool

FROM HIGHWAY 1 (TRANS-CANADA HIGHWAY): take exit 29 (Willingdon south), go south on Willingdon. BCIT is on your left.

From here:

FOR WSC: turn left on Goard Way, right on White Avenue North (one block south of Canada Way)

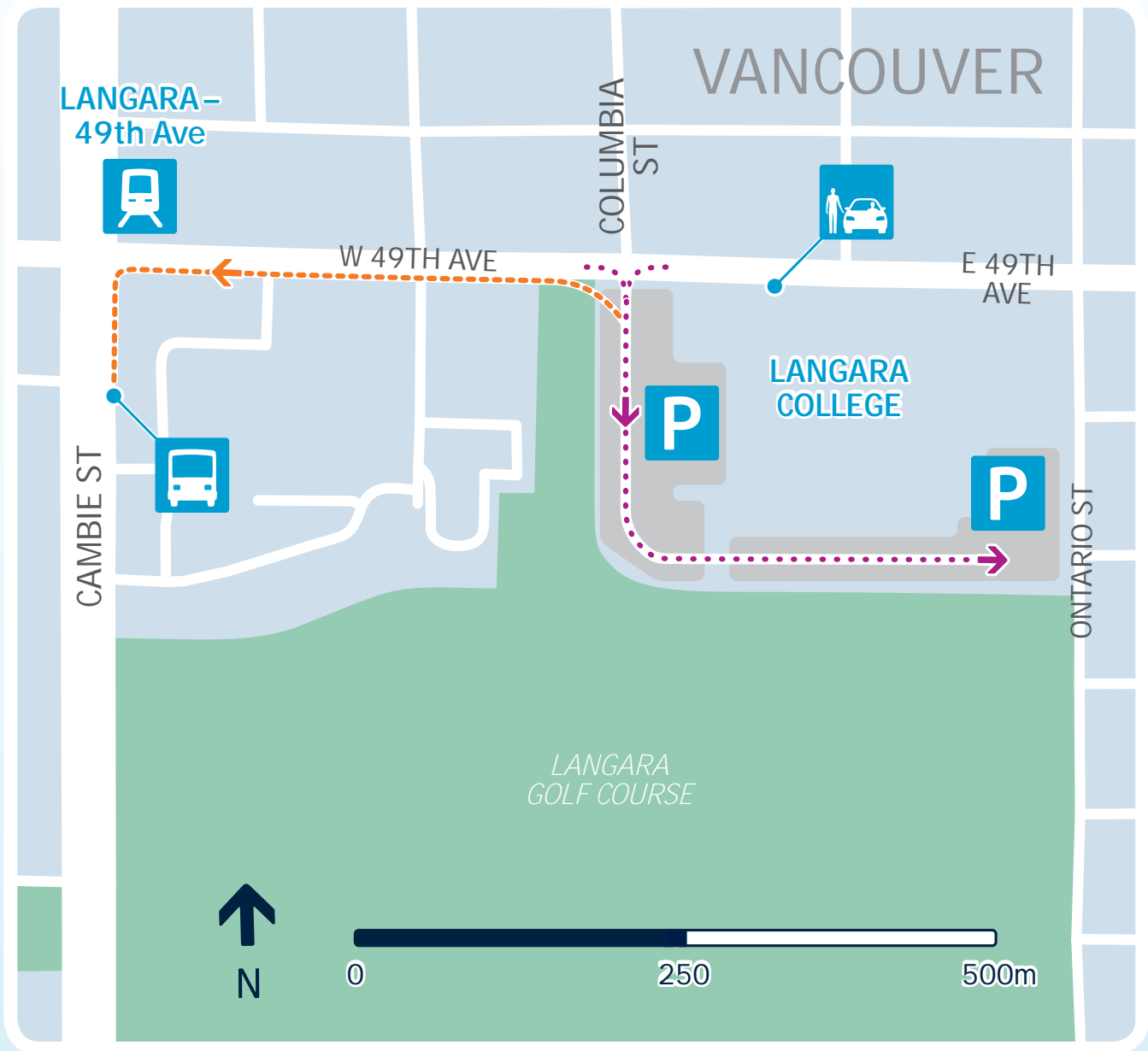
FOR W.O.P.: turn left on Canada Way, turn right on Carey Ave.



DEPARTURE HUB FOR
WHISTLER
CREEKSIDE

Langara College

100 WEST 49TH AVENUE, VANCOUVER



WHISTLER CREEKSIDE

GETTING HERE



By public transit

Canada Line rapid transit to Langara – 49th Avenue station

Allow at least 15 minutes' travel time by rapid transit from downtown Vancouver. Proceed to spectator loading zone on Cambie Street south of 49th Avenue.

BUS ROUTES: 3, 15, 49, N15

Allow at least 45 minutes' travel time by bus from downtown Vancouver.



By rideshare/carpool

FROM HIGHWAY 7 (LOUGHEED) WESTBOUND: turn left on Boundary Road, turn right on 49th Avenue.

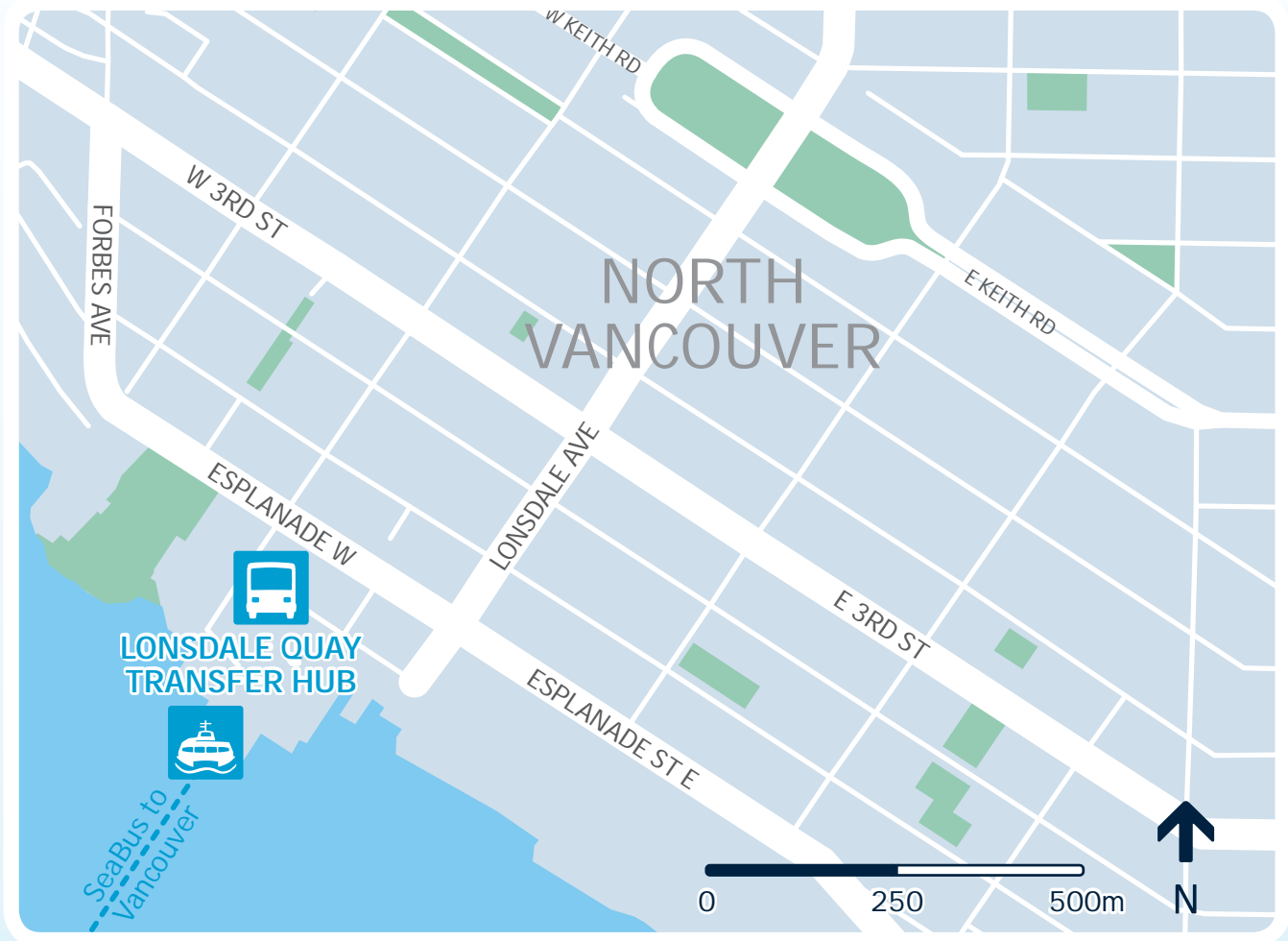
FROM HIGHWAY 1 (TRANS-CANADA HIGHWAY) FROM NORTH VANCOUVER: take exit 28A (Boundary Road), go south on Boundary Road, then turn right on 49th Avenue.

FROM HIGHWAY 1 (TRANS-CANADA HIGHWAY) WESTBOUND FROM EXIT 28 (GRANDVIEW HIGHWAY): stay on Grandview Highway (it becomes 12th Avenue), turn left on Clark Drive (it becomes Knight Street), turn right on 49th Avenue. The departure hub is on your left.



TRANSFER HUB FOR CYPRESS MOUNTAIN AND THE WHISTLER SLIDING CENTRE

Lonsdale Quay
NORTH VANCOUVER



GETTING HERE



By public transit

SeaBus from Waterfront station in downtown Vancouver
Allow 12 minutes' travel time by SeaBus.



BUS ROUTES: 228, 229, 230, 236, 239, 246, N24 to Lonsdale Quay



Do not drive or rideshare/carpool to this transfer hub
as there is no parking for Olympic spectators.

GETTING AROUND WHISTLER



BC Transit

bctransit.com

BC Transit operates the public bus system, including service within Whistler and between Whistler, Squamish and Pemberton. During the Games, BC Transit will operate 24 hours a day, seven days a week, on most routes.

Bus frequency

Five to 10 minutes during peak hours (05:00 to 24:00)

Fifteen to 30 minutes during late-night hours (24:00 to 05:00), on most routes.



Walking

whistler.ca

Walking the Valley Trail system is a big part of village life in Whistler. For more information visit whistler.ca.

WHISTLER TO VANCOUVER

Travelling by private coach to Vancouver is the easiest way to get from Whistler to Vancouver. Once in Vancouver, take public transit to your venue — the fare is included in your event ticket.

If you choose to drive, please consider rideshare/carpooling. Drive to the nearest TransLink Park & Ride and access the public transit system to your venue. Remember the public transit fare is included with your event ticket. For more information visit translink.ca.

Tip The Olympic bus departs within two hours after the end of competition. If you choose to remain in Whistler longer, you are responsible for your own return trip to Vancouver. You are welcome to book a seat on a private carrier at your own cost. For more information visit whistler.com.

WHISTLER TO CYPRESS MOUNTAIN

There is no parking at Cypress Mountain nor is it accessible using public transit. The dedicated Olympic bus network service from Metro Vancouver will take you there.

To reach your Olympic bus network departure hub from Whistler, take a private coach to Metro Vancouver, then use public transit. Remember to book your seat on the Olympic bus network in advance.

If you choose to drive, please consider rideshare/carpooling. Book a parking spot at the departure hub as well as a seat on the bus in advance. Drive to your departure hub and hop on the Olympic bus network to Cypress Mountain.

