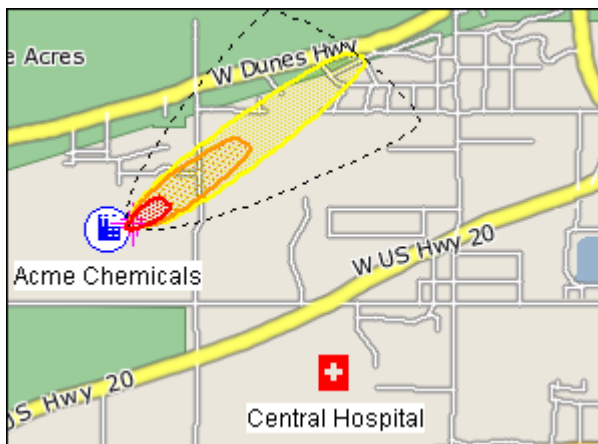


MARPLOT®

MARPLOT (Mapping Application for Response, Planning, and Local Operational Tasks) is the mapping program for the CAMEO® software suite.

With MARPLOT's easy-to-use GIS interface, you can quickly view and modify maps, and you can create your own objects.

MARPLOT is developed jointly by the National Oceanic and Atmospheric Administration (NOAA) and the U.S. Environmental Protection Agency (EPA).



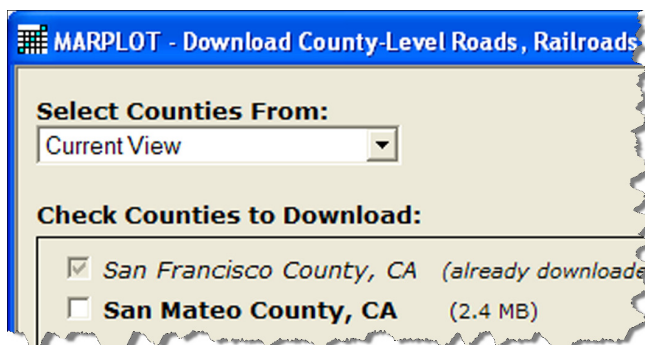
ALOHA® threat zone (near the chemical facility object) displayed on a sample MARPLOT map.

Key Program Features

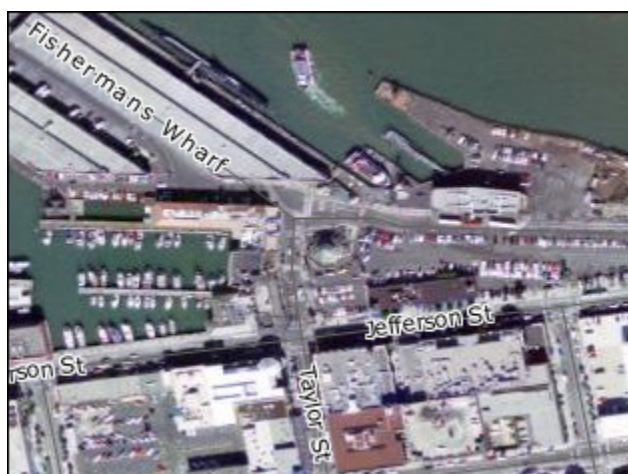
- Switch quickly between three basemaps: standard map files, aerial photos, and topographical maps.
- Get population estimates.
- Get information about basemap features.
- Link overlay objects to the CAMEO database program.
- Easily display ALOHA threat zones.
- Customize your view by drawing your own objects on the map and specifying which basemap layers are shown.

Switch Between Basemaps and Download Additional Layers

MARPLOT's standard basemap includes items such as roads, cities, lakes, and national parks (as shown in the picture at left). The program comes pre-loaded with these layers at the national level. As you zoom in closer, MARPLOT will give you the option to download additional map layers to your computer.



MARPLOT also comes with Satellite and Topo basemaps. By default, these background images are provided by web mapping services that require an Internet connection. However, you can also use aerial photos and topographical maps stored on your computer as basemaps.



A MARPLOT map showing Fisherman's Wharf in San Francisco, California. An aerial photo of the area serves as the satellite basemap, and labels are displayed on top of the basemap to indicate roads and other features.

Add Objects and Data

There are seven types of overlay objects that you can create on top of the basemaps: symbols (points), squares, circles, polygons, polylines, text labels, and picture objects.

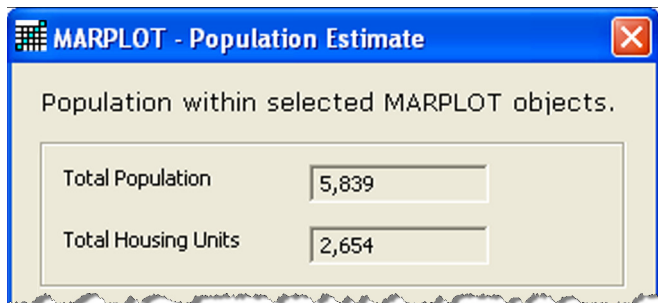
It is simple to create overlay objects, reposition them on the map, and share them with others. Overlay objects are ideal for locations that you are marking during an incident. You can also link overlay objects to CAMEO to store information about them in a searchable database.

However, you can also add objects to the basemap itself by adding basemap layers. MARPLOT's Download Manager allows you to download several national-level layers (such as airports and EPA-regulated sites) that you can add as points of interest on your basemap.

MARPLOT also has the ability to import shapefiles as overlay objects or basemap layers.

Get Population Estimates

You can get population estimates within a specified radius, in a selected area, or within the boundaries of an overlay object. The estimates are based on data from the 2000 census.



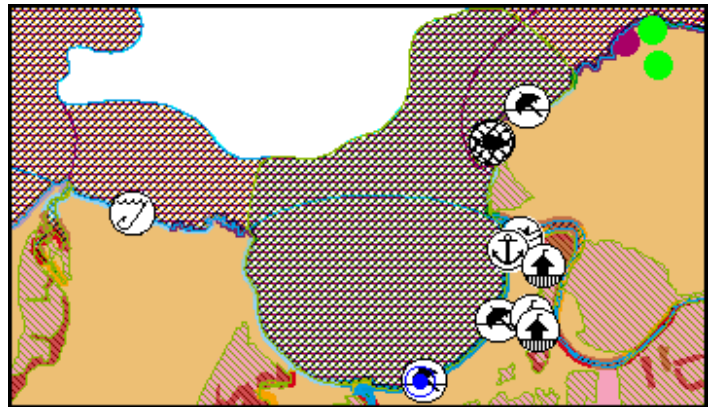
Getting MARPLOT

To download MARPLOT, go to <http://www.epa.gov/emergencies/content/cameo/marplot.htm>.

The latest version of MARPLOT is only available for Windows, but it can also be run on Intel-based Macintosh computers that have virtualization software.

Display Environmental Sensitivity Index Maps

You can also use MARPLOT to display ESI maps, another product produced by NOAA's Office of Response and Restoration.



On ESI maps, colors and icons are used to mark the sensitive areas along the shoreline. During an oil spill, these maps can be used to prioritize and protect the shoreline environment.

ESI maps show areas and resources that are sensitive to oil:

- Biological resources (such as nesting birds),
- Human-use resources (such as a tourist beach or a commercial fishing area), and
- Sensitive shorelines (such as coral reefs).

To use the MARPLOT ESI maps, you need an ESI Viewer, which will allow you to view, print, and run simple searches on ESI data for a specific region. For more information, see <http://response.restoration.noaa.gov/esi>.

MARPLOT Contact Information

For additional information:

<http://response.restoration.noaa.gov/marplot>
orr.cameo@noaa.gov

NOAA's Office of Response & Restoration—Protecting our Coastal Environment

**For further information about NOAA's Office of Response and Restoration,
please call (301) 713-2989 or visit our Web site at
response.restoration.noaa.gov**

